

Environmental Policy Quests

By L.E. Becker

Season 1

...with Senator Henry Stern as Cat

Senator Ben Allen as Tree

Senator Mike McGuire as Squirrel

& Senator Joshua Becker as Bear

Season 1 Introduction (1/2)



Season 1 Introduction (2/2)



How am I supposed to go on QUESTS if I'm a TREE?

I gave you teleporatation powers, Ben.

Why am I a bear?

College Sports vengeance. The band is on the field, Josh

Did I explain your brain good?

Yes. Explain it that way everytime.

Why does Henry get to keep his hair after animorphing?

I've got a lot of cats running around in my imagination, Mike. Don't want him to get lost.



TO BE CONTINUED...

Environmental Policy Quest #1: Wildlife Corridors in the LA Media Market (1/4)



See, Mike, if we just create access points for wildlife across the 210, the 5, the 101, and the 405, we could see the reintroduction of native species back into the Santa Monica Mountains that haven't been there for over 2 centuries - like bears!

Why do you keep saying "the" before each freeway number?



Turns out, there are a ton of cats in the Environmental Policy Section of Ellie's imagination, and their sole purpose is to handle tasks that fall into "ethical grey areas". Snuggles here has been spamming social suburban mom facebook groups with Wildlife Corridor articles, and Bandit has tipped off local news outlets about residential bear sightings. Ready, Josh?

I'm nervous, what if I get shot with a tranquilizer dart?

Nah, bro. They stopped doing that in the 90's. It'll be chill!

ENVIRONMENTAL POLICY QUESTS HQ

Environmental Policy Quest #1: Wildlife Corridors in the LA Media Market (2/4)



Environmental Policy Quest #1: Wildlife Corridors in the LA Media Market (3/4)



Environmental Policy Quest #1: Wildlife Corridors in the LA Media Market (4/4)



Sheeesh_



Sheeesh



Sheeesh .



Sheeesh .

I was scared at first, but honestly it made me think about how we should build more Wildlife Corridors so the bears can go to the beach.



HOMEOWNER REACTS!

Earlier:



Whee!

New @ 11... BEAR!



Environmental Policy Quest #2: Wind Surfing the North Coast (1/4)



Environmental Policy Quest #2: Wind Surfing the North Coast (2/4)



Environmental Policy Quest #2: Wind Surfing the North Coast (3/4)



Environmental Policy Quest #2: Wind Surfing the North Coast (4/4)



Environmental Policy Quest #3: Electric Scenic Road Trip (1/4)



Environmental Policy Quest #3: Electric Scenic Road Trip (2/4)



♪ Can't stop addicted to the shindig
Chop top he says I'm gonna win big!
Choose not a life of imitation
Distant cousin to the reservation!
♪ ♪ ♪

Environmental Policy Quest #3: Electric Scenic Road Trip (3/4)



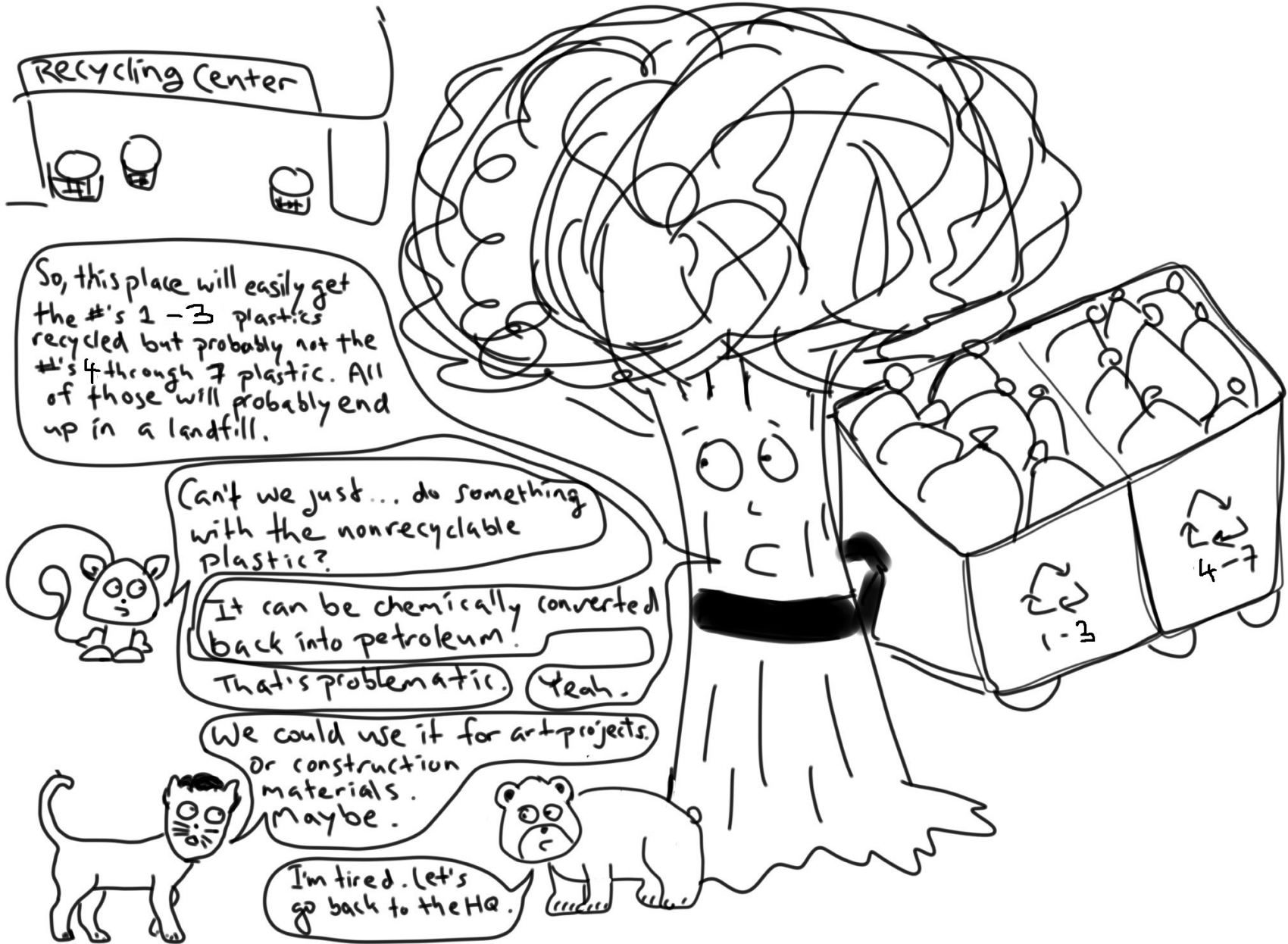
Environmental Policy Quest #3: Electric Scenic Road Trip (4/4)



Environmental Policy Quest #4: Problematic Plastic (1/4)



Environmental Policy Quest #4: Problematic Plastic (2/4)



Environmental Policy Quest #4: Problematic Plastic (3/4)



Environmental Policy Quest #4: Problematic Plastic (4/4)



Season 2

...with Senator Monique Limón as Eagle
Assemblymember Autumn Burke as Rabbit
Assemblymember Cristina Garcia as Desert Tortoise
& Senator Melissa Melendez as Joshua Tree

(feat. Senator Henry Stern as Cat
Senator Ben Allen as Tree
Senator Mike McGuire as Squirrel
& Senator Joshua Becker as Bear)

Season 2 Introduction (1/4)



Season 2 Introduction (2/4)



Season 2 Introduction (3/4)



Season 2 Introduction (4/4)



Environmental Policy Quest #5: When in Drought, Geoengineer it Out! (or don't.) (1/4)



Environmental Policy Quest #5: When in Drought, Geoengineer it Out! (or don't.) (2/4)



Wait - you're cloud seeding!?! Silver iodide is toxic.

Henry, it might work! Do you know how many residents in my district are facing potentially multi-day water shortages this year?

Well maybe if the desert-located golf courses switched from non-native grass lawns to astroturf, your district wouldn't have that problem!

Golf on astroturf? Are you hearing yourself? Should I start counting grass lawns in Calabasas? You know what? This isn't even my idea.

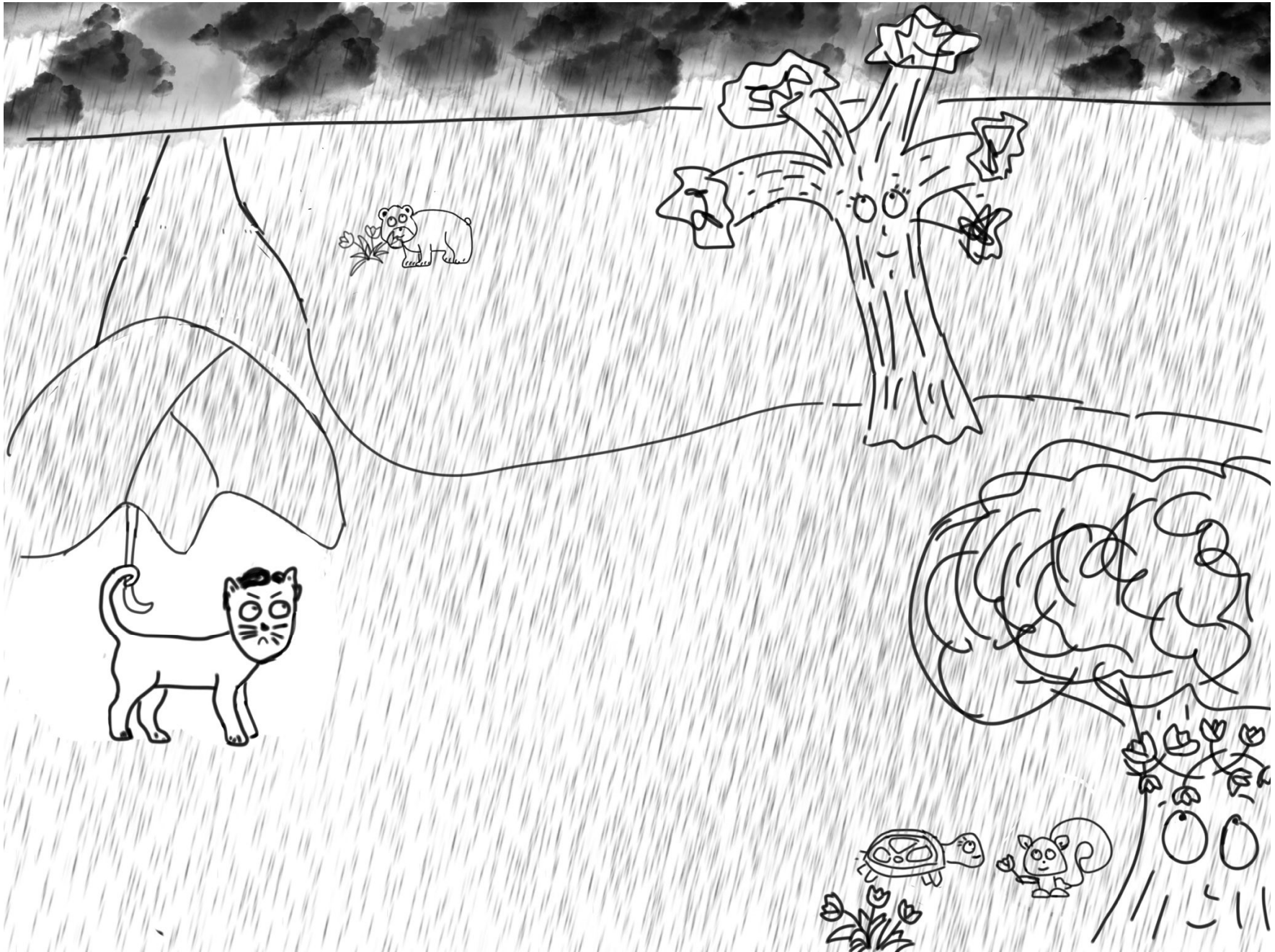
Whose idea was it?

I don't know. I vote no on bills all the time and they become law, anyway. I've stopped keeping track.

Environmental Policy Quest #5: When in Drought, Geoengineer it Out! (or don't.) (3/4)



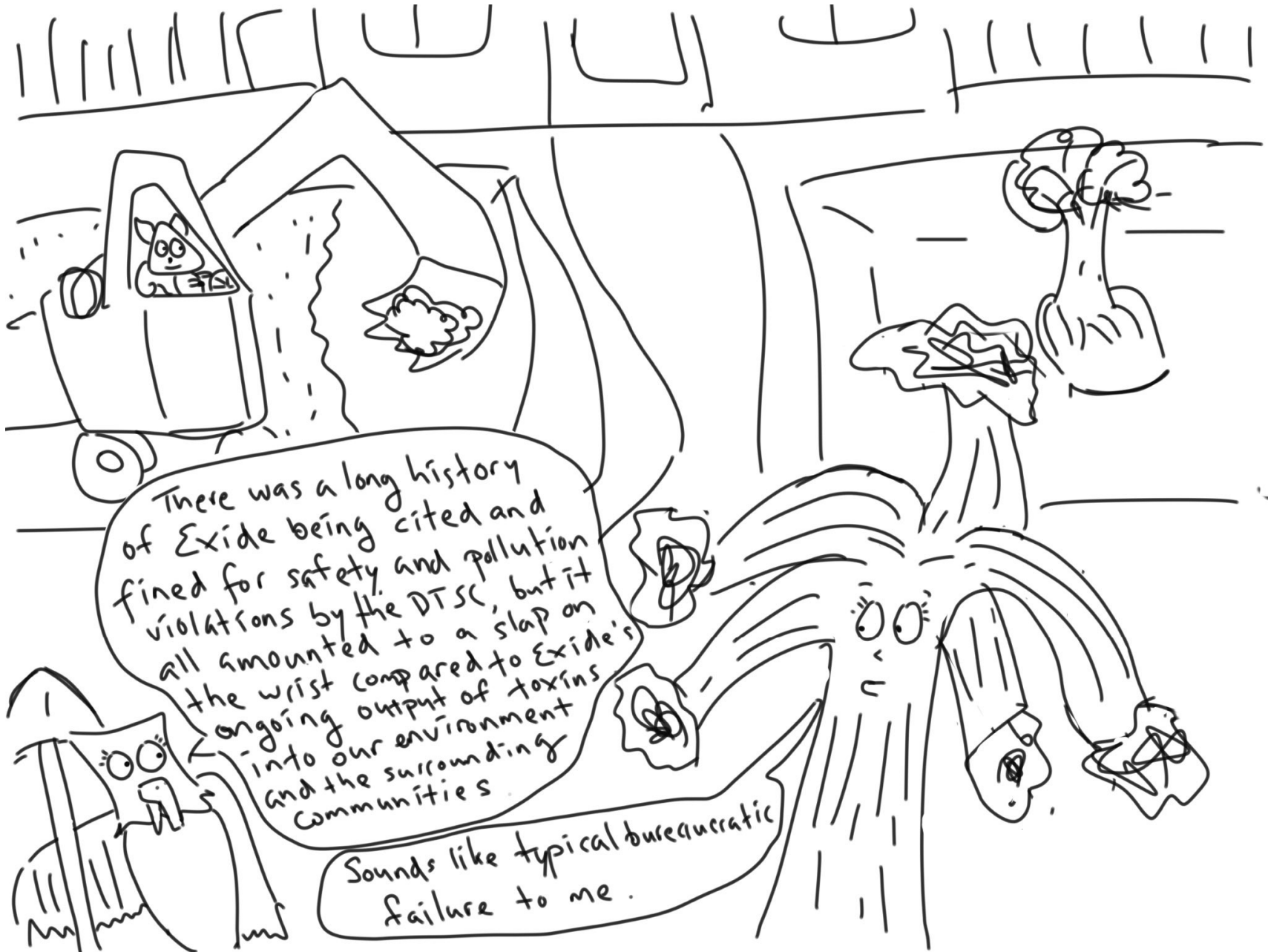
Environmental Policy Quest #5: When in Drought, Geoengineer it Out! (or don't.) (4/4)



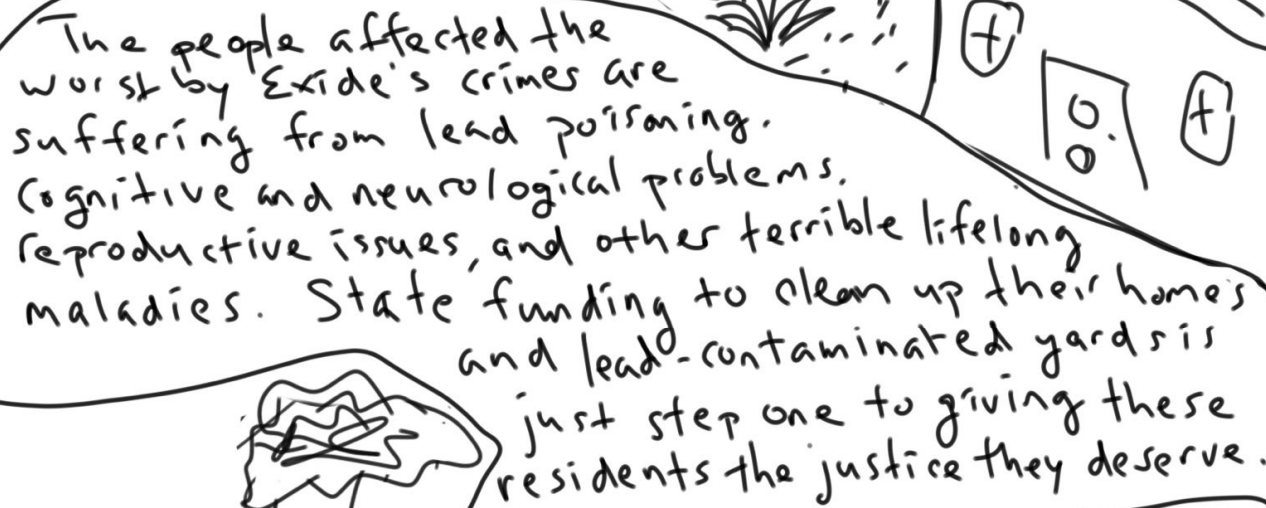
Environmental Policy Quest #6: Excise Exide – Essential Engagement (1/4)




Environmental Policy Quest #6: Excise Exide – Essential Engagement (2/4)



Environmental Policy Quest #6: Excise Exide – Essential Engagement (3/4)



The people affected the worst by Exide's crimes are suffering from lead poisoning. Cognitive and neurological problems, reproductive issues, and other terrible lifelong maladies. State funding to clean up their homes and lead-contaminated yards is just step one to giving these residents the justice they deserve.

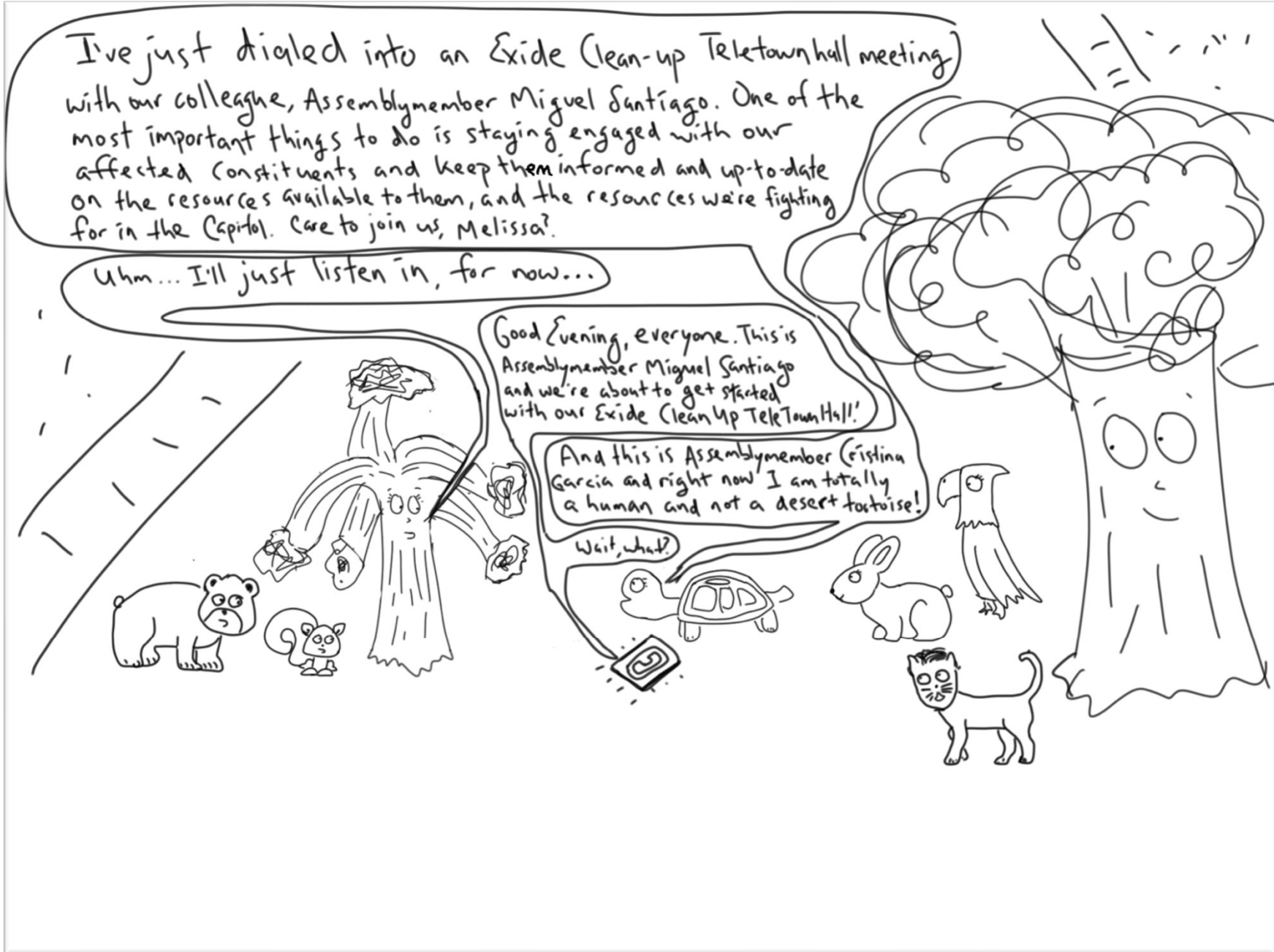


I hear you. I just don't want to see hundreds of millions of dollars get boondoggled!

It won't! We're already doing the cleanup, we know how much it costs - we just need this in our budget to keep up the efforts!



Environmental Policy Quest #6: Excise Exide – Essential Engagement (4/4)



Environmental Policy Quest #7: Fishful Thinking at the Salton Sea (1/4)



Environmental Policy Quest #7: Fishful Thinking at the Salton Sea (2/4)



Environmental Policy Quest #7: Fishful Thinking at the Salton Sea (3/4)



Ok, Melissa!
I just flew in from
the Pacific Ocean
with this 100+
mile hose.
Where should we
get started?

Wait - you're going to refill the
Salton Sea with ocean water from
over 100 miles away?

It's an option being considered
for restoration.

Probably a lot more environment-friendly
than what Mulholland did to Owens Valley.

Environmental Policy Quest #7: Fishful Thinking at the Salton Sea (4/4)



Environmental Policy Quest #8: Present Intervention (1/4)



Environmental Policy Quest #8: Present Intervention (2/4)



Environmental Policy Quest #8: Present Intervention (3/4)



We all know how hard we need to fight against climate change to keep our planet thriving for centuries to come. And it is a battle that humanity will be fighting for generations. But I believe this is a fight we can win, especially with amazing leaders like all of you — stepping up and leaning into that fight.

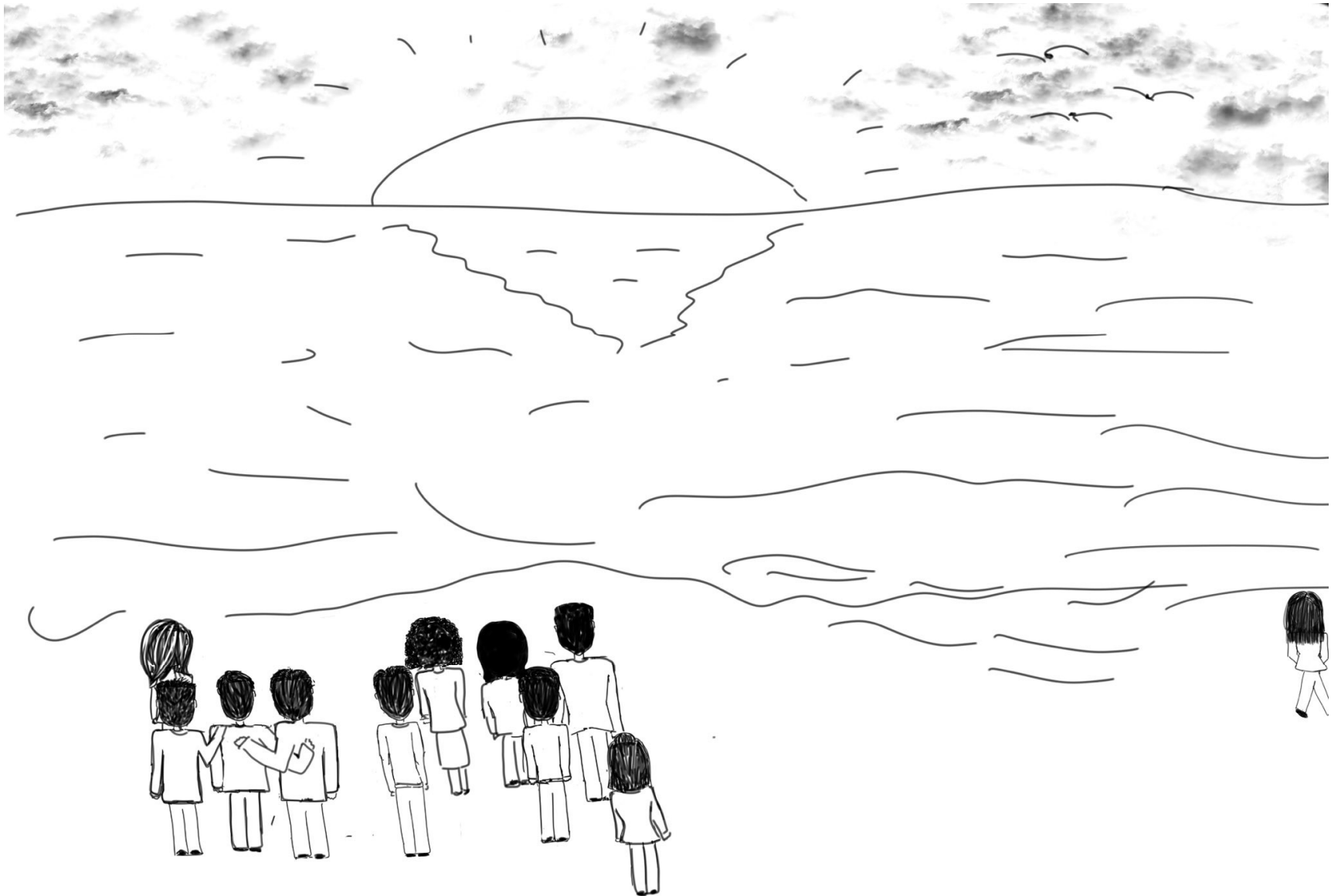
But how about we get back to the heavy lifting tomorrow, and just take this moment to appreciate our daily gift from nature: the opportunity to watch another gorgeous sunset over the grand Pacific Ocean.

Yeah. I'd like that.

Would you like to consent to a hug?

Sniffle Yeah.

Environmental Policy Quest #8: Present Intervention (4/4)



Season 3: Water!

...with Senator Ben Allen as Tree

Senator Joshua Becker as Bear

Senator Henry Stern as Cat

& Senator Mike McGuire as Squirrel

(Quest #11: feat. Senator Monique Limón as Eagle

& Senator Scott Wiener as Dog)

Environmental Policy Quests Season Three: Introduction (1/2)



Environmental Policy Quests Season Three: Introduction (2/2)



I might throw in a couple cameos this season. Have fun!



TO BE CONTINUED...

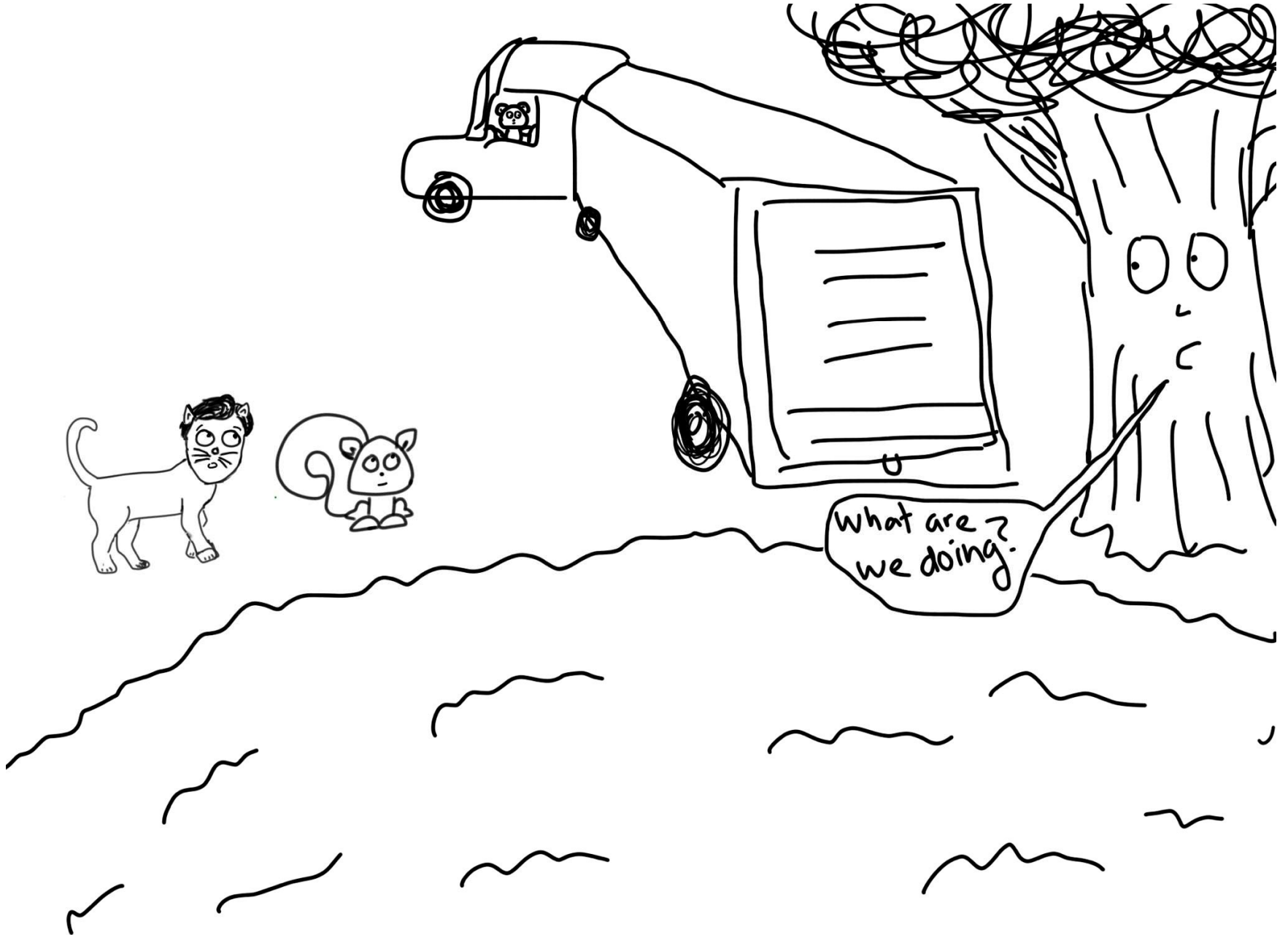
Environmental Policy Quest #9: DDT Under The Sea (1/2)



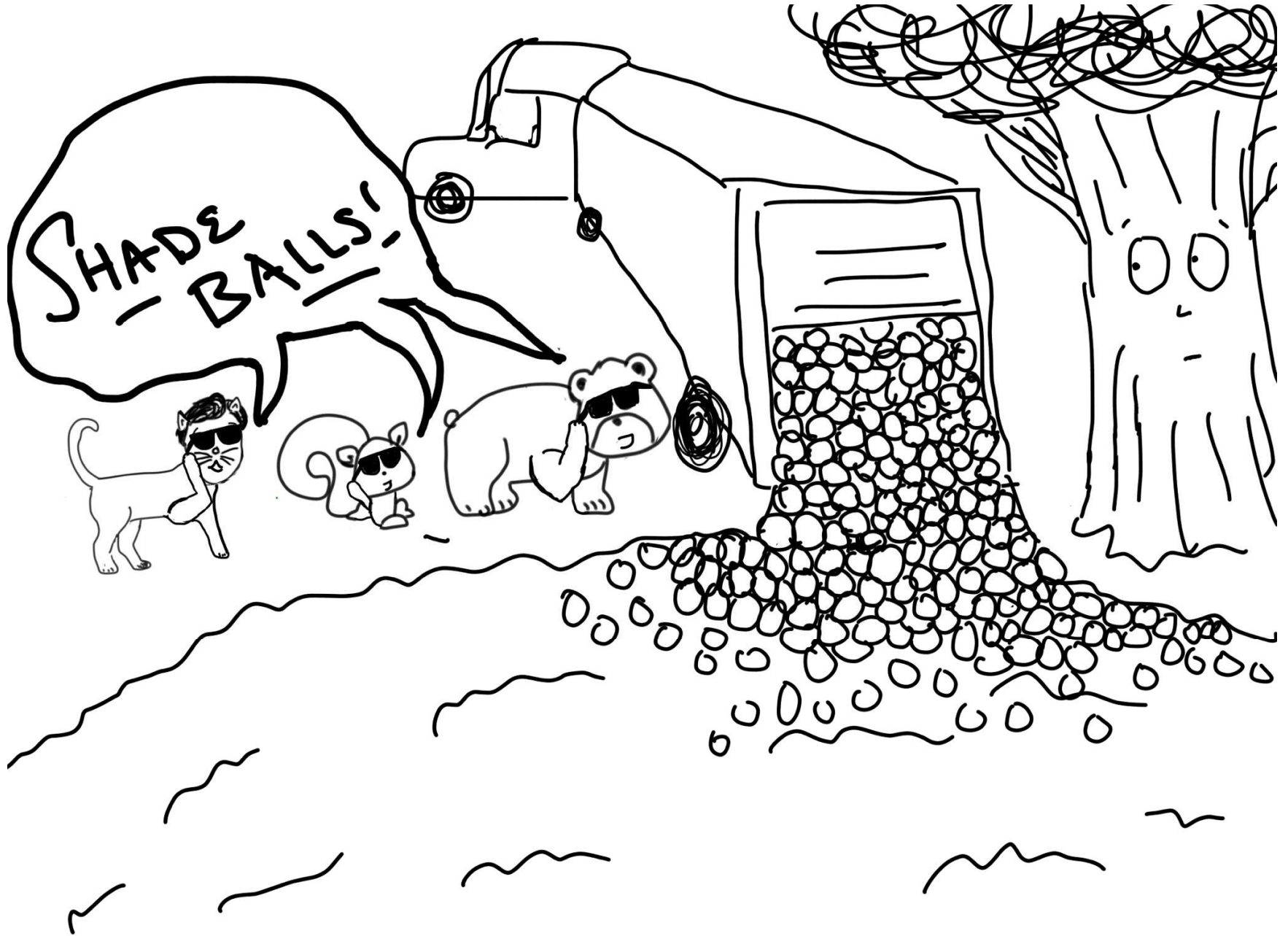
Environmental Policy Quest #9: DDT Under The Sea (2/2)



Environmental Policy Quest #10: Shade Balls. (1/3)



Environmental Policy Quest #10: Shade Balls. (2/3)



Environmental Policy Quest #10: Shade Balls. (3/3)



Environmental Policy Quest #11: Arcata Wastewater Treatment Facility – The Musical (1/4)



Environmental Policy Quest #11: Arcata Wastewater Treatment Facility - The Musical (2/4)



Environmental Policy Quest #11: Arcata Wastewater Treatment Facility – The Musical (3/4)



Environmental Policy Quest #11: Arcata Wastewater Treatment Facility – The Musical (4/4)

♪ The engineers of this facility took salty, useless land and turned it into a habitat so marvelous and grand! So many thriving species, 5 miles of trails for the bipedals A resting ground for hundreds of types of birds on their migratory path! ♪

♪ This is really quite impressive ♪

♪ Sounds like I can eat the local-caught fish, here! ♪

Yes! ♪ All thanks to the Arcata Wastewater Marshes turning sewage into clean water discharge innt... the Humboldt Baaay! ♪



Good show.

Encore!



Environmental Policy Quest #12: Doomed Chinooks and Icy Moods (1/4)



Environmental Policy Quest #12: Doomed Chinooks and Icy Moods (2/4)



Environmental Policy Quest #12: Doomed Chinooks and Icy Moods (3/4)



Environmental Policy Quest #12: Doomed Chinooks and Icy Moods (4/4)

